



*Presents*

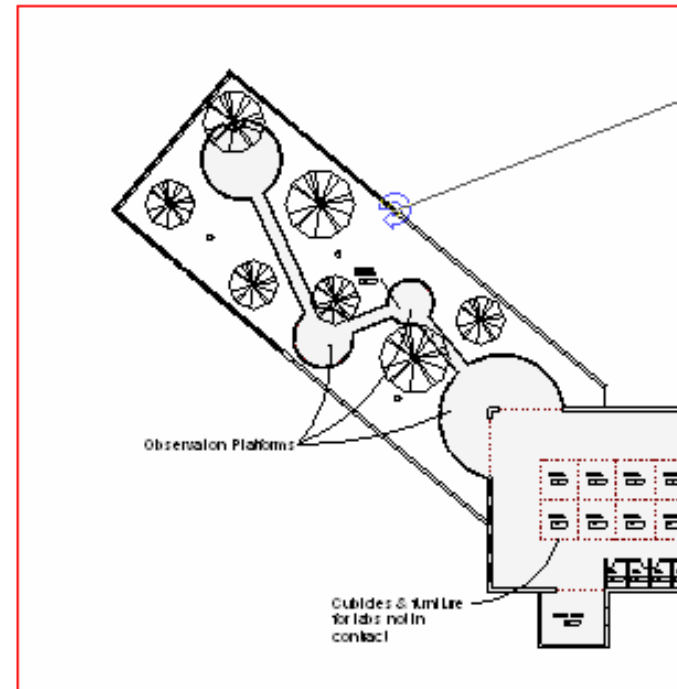
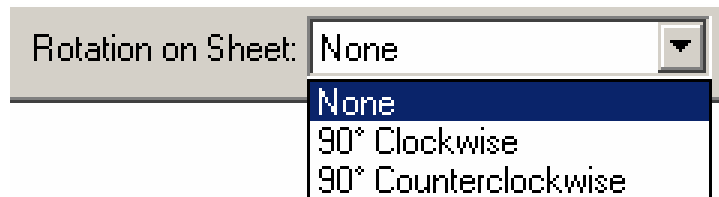
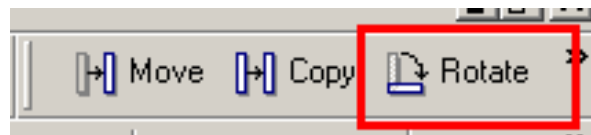
**REVIT® Architecture 2008**

**UPDATE**

# REVIT® Architecture 2008



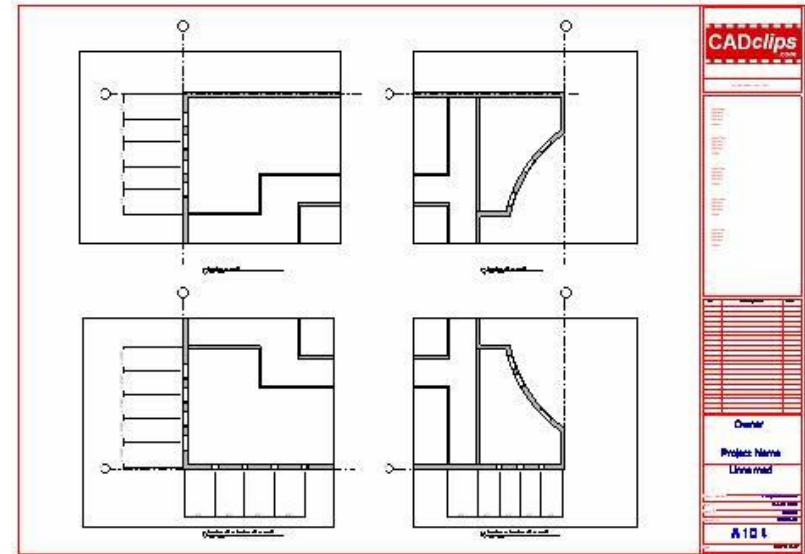
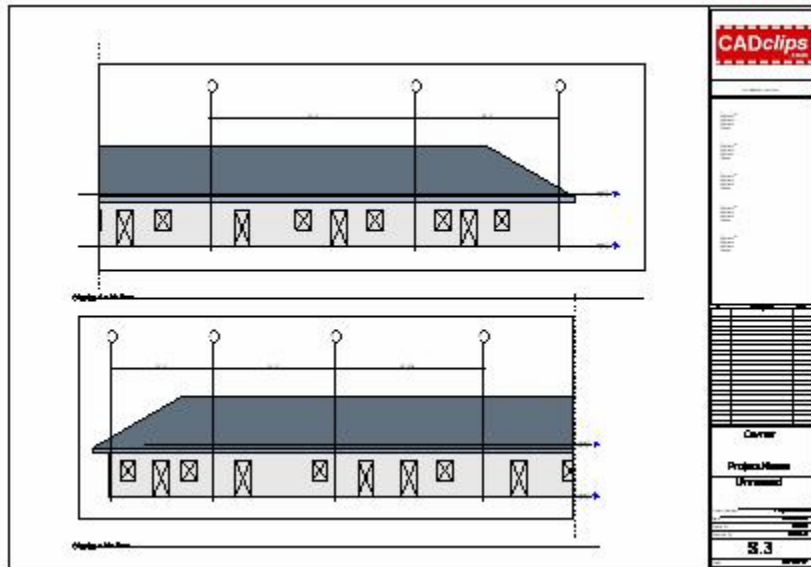
# UPDATE



## Project Views Rotating Views

# REVIT® Architecture 2008

# UPDATE

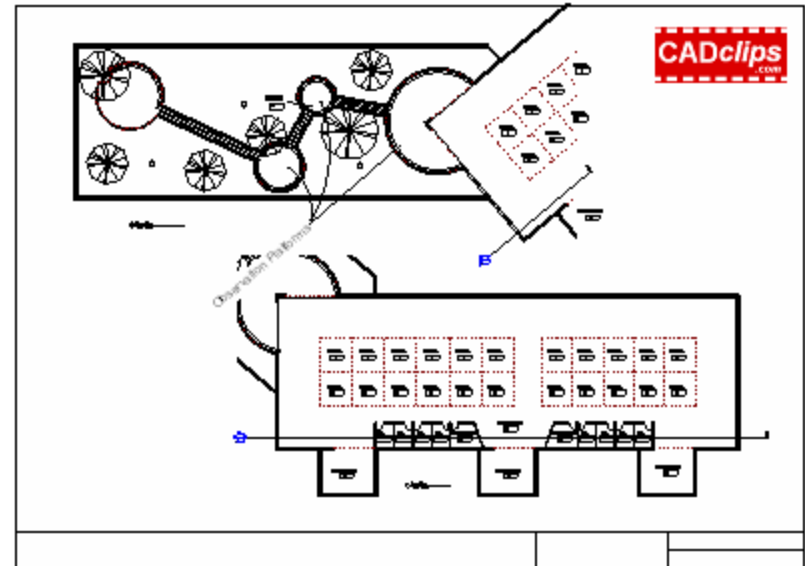
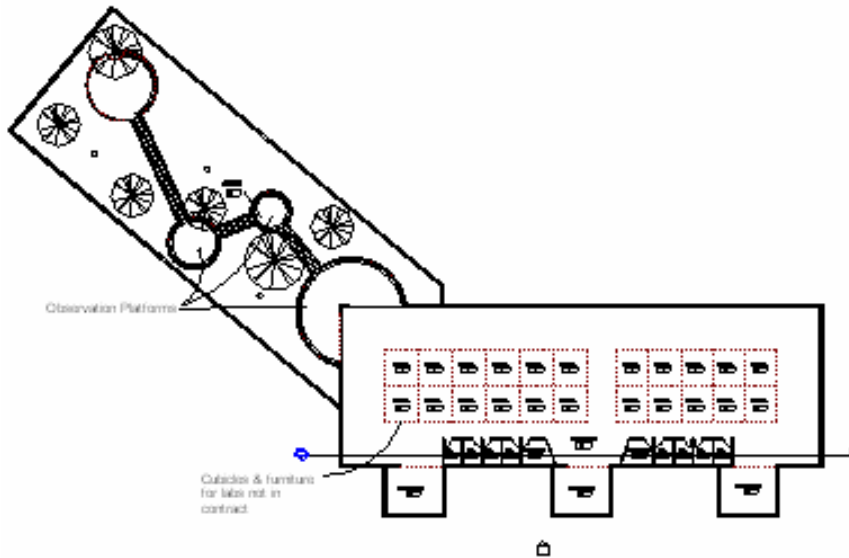


## Project Views Dependant Views

# REVIT® Architecture 2008



# UPDATE



## Project Views

## Dependant Views Sample

# REVIT® Architecture 2008

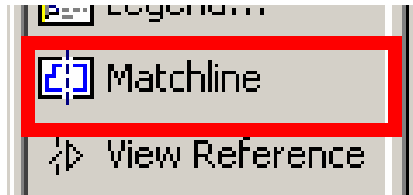
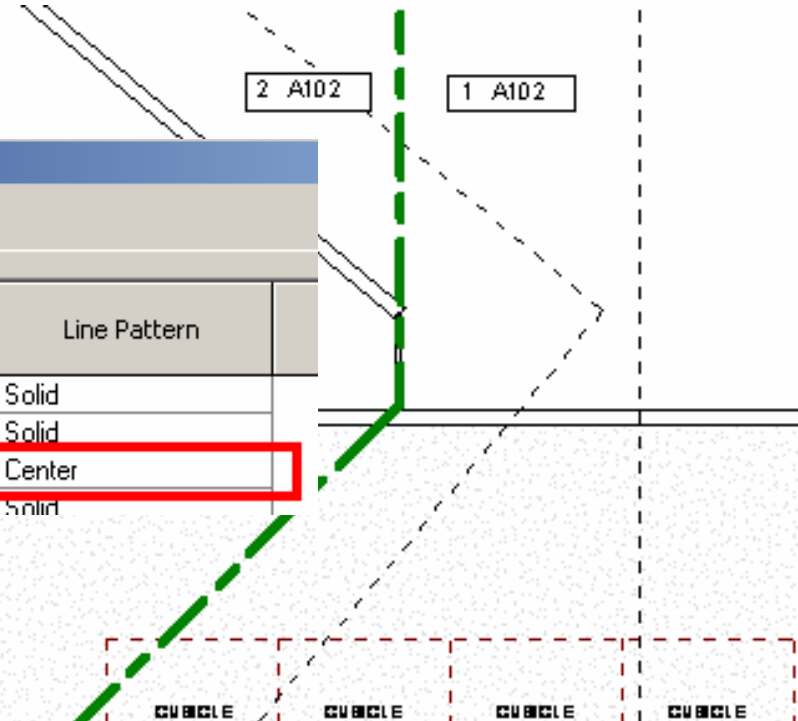


# UPDATE

**Object Styles**

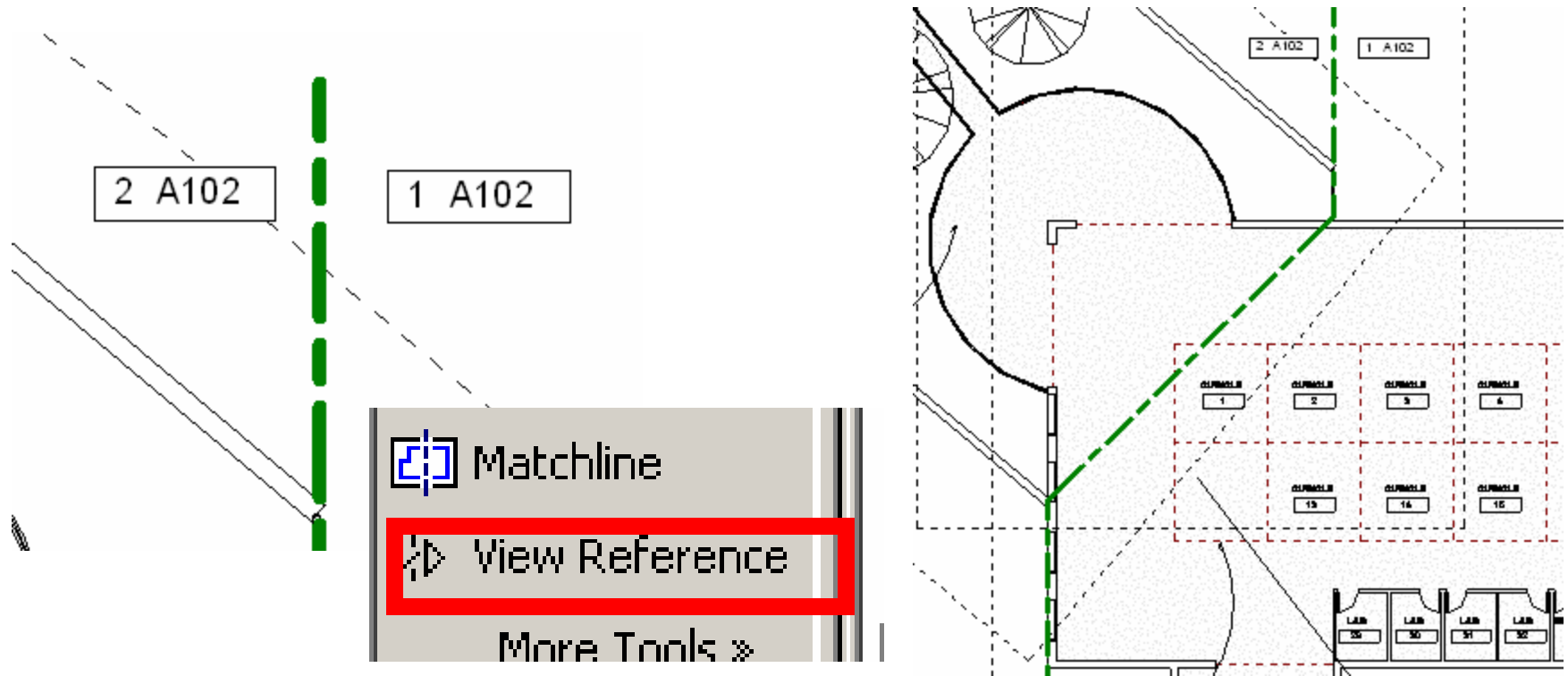
Model Objects | Annotation Objects | Imported Objects

Category	Line Weight	Line Color	Line Pattern
	Projection		
Lighting Fixture Tags	1	Black	Solid
Mass Tags	1	Black	Solid
<b>Matchline</b>	<b>10</b>	<b>RGB 000-128-000</b>	<b>Center</b>
Material Tags	1	Black	Solid



## Project Views Matchlines

## UPDATE



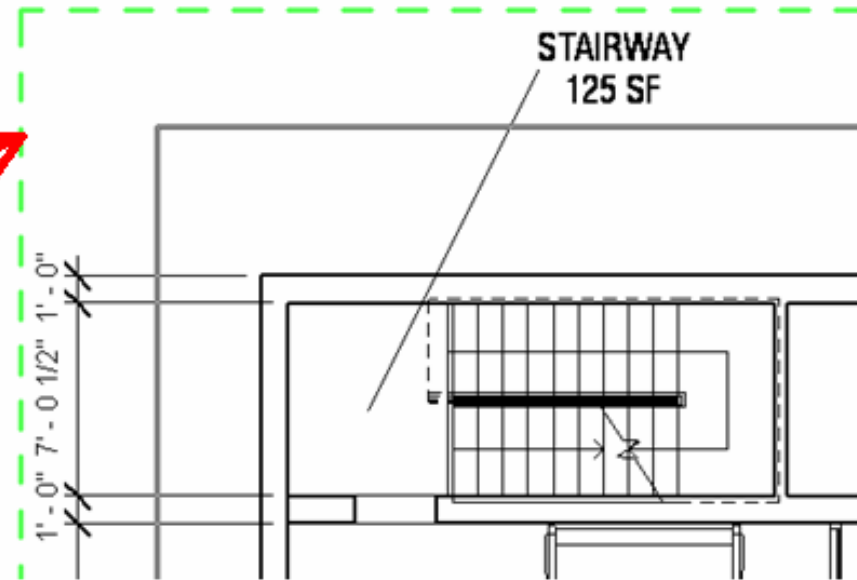
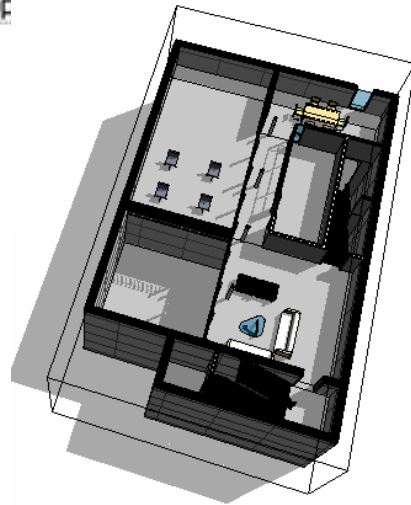
## Project Views View References Tags

# REVIT® Architecture 2008



# UPDATE

Extents	
Crop View	<input checked="" type="checkbox"/>
Crop Region Visible	<input checked="" type="checkbox"/>
Annotation Crop	<input checked="" type="checkbox"/>
view Range	
Associated Level	FIRST FLOOR
Scope	None



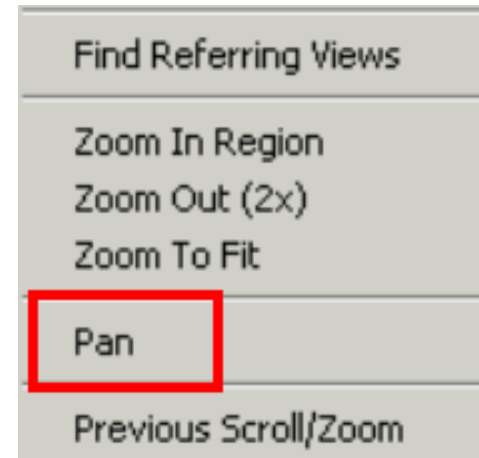
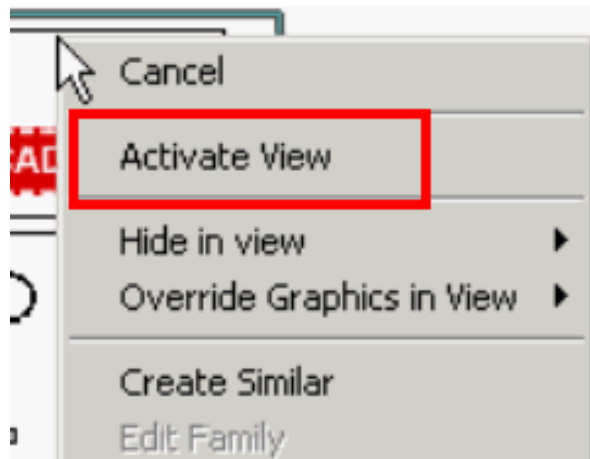
## Project Views

## Annotation Crop Region

# REVIT® Architecture 2008



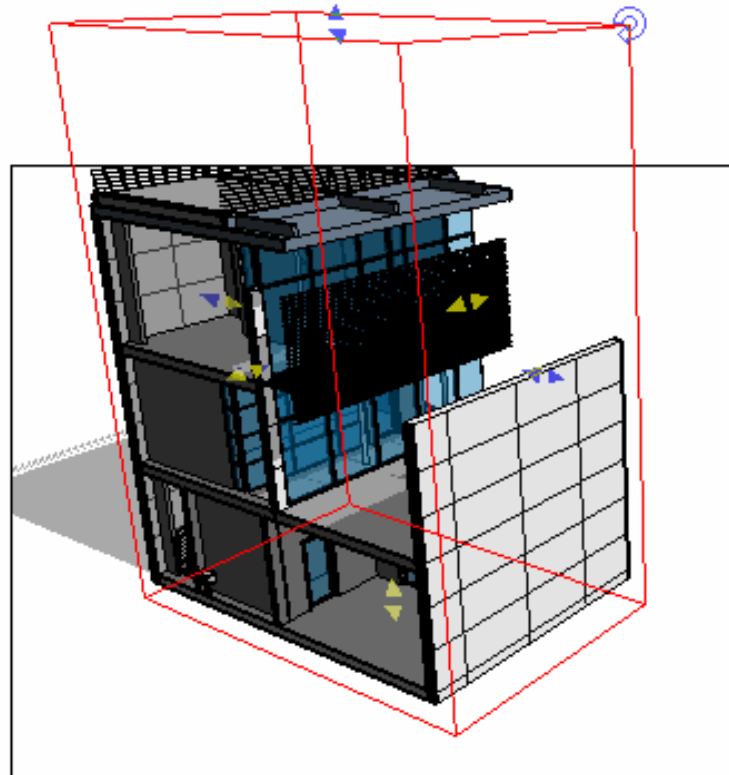
# UPDATE



## Project Views

## Panning Views on a Sheet

# UPDATE



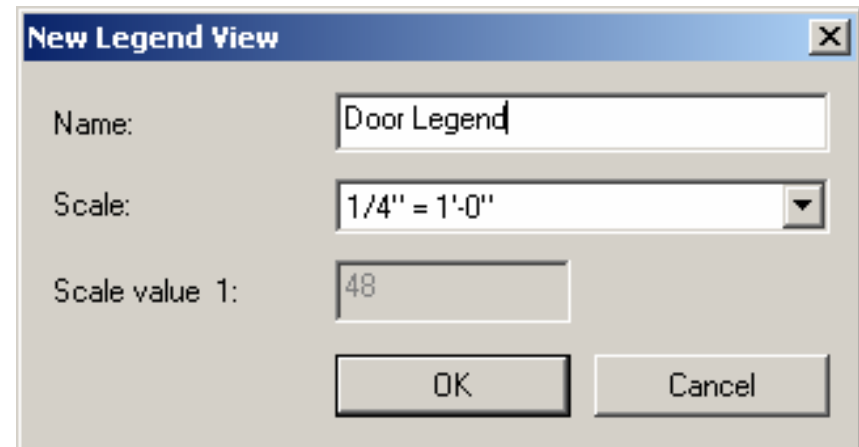
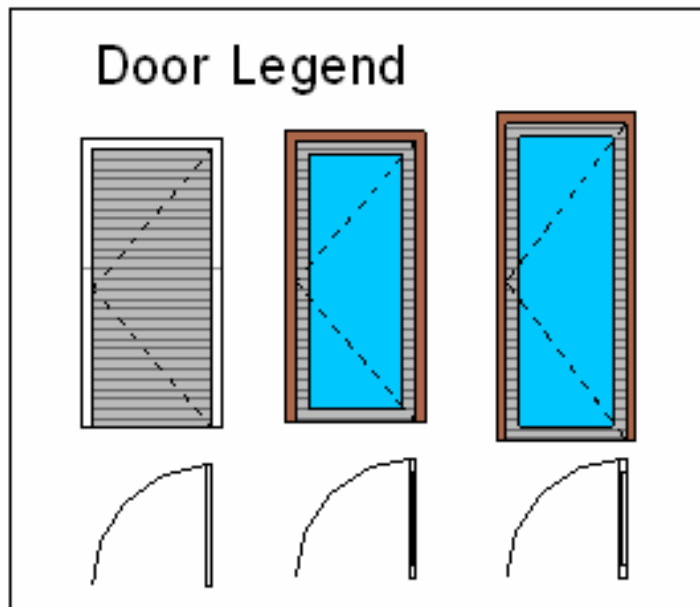
## Project Views

# Section Box Enhancements

# REVIT® Architecture 2008



# UPDATE

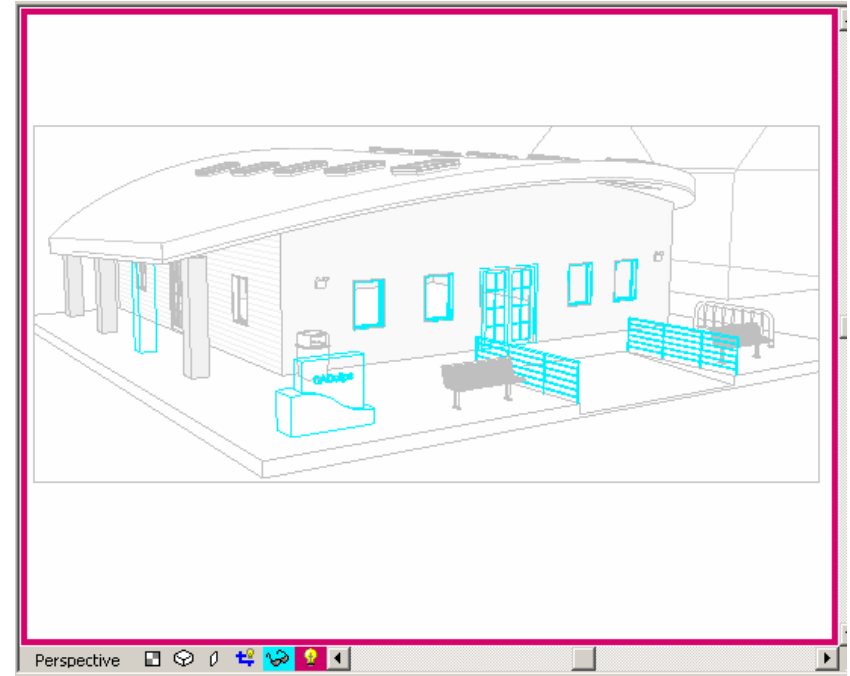
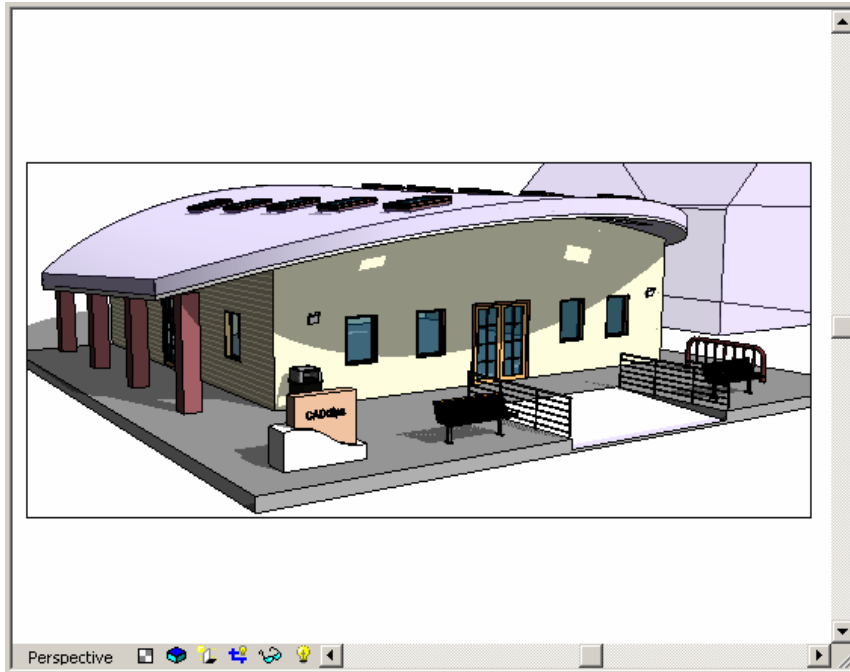


## Project Views Legend Views

# REVIT® Architecture 2008



## UPDATE



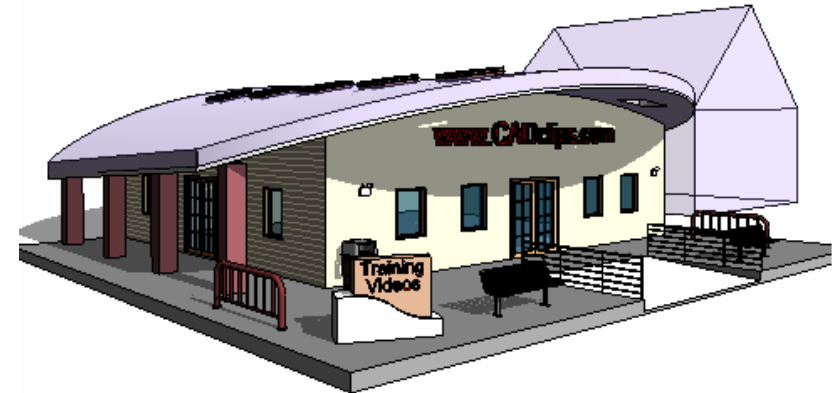
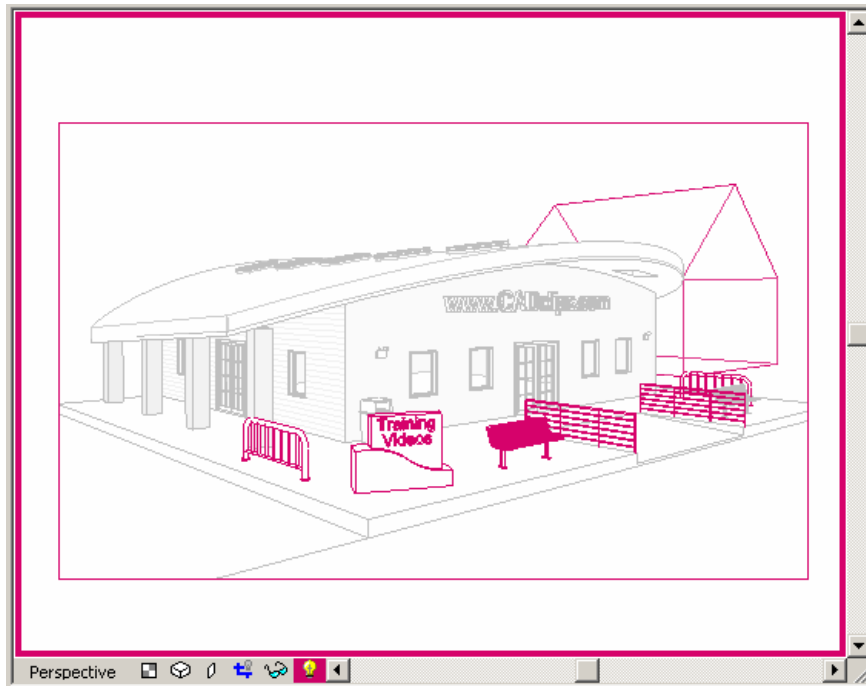
## Visibility and Graphics

8.13..07 Temporary Hide / Isolate Enhancements

# REVIT® Architecture 2008

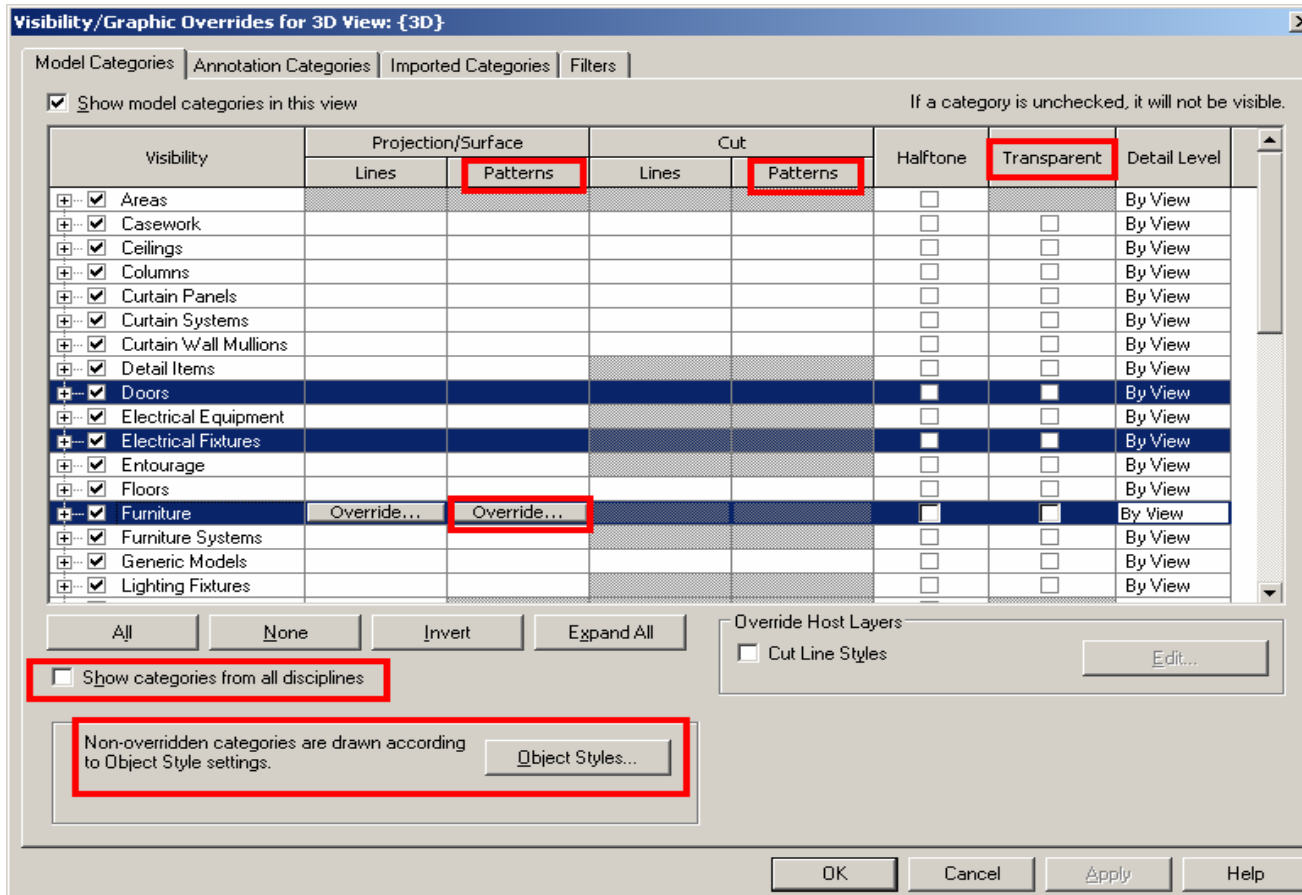


## UPDATE



## Visibility and Graphics Hide in View

# UPDATE



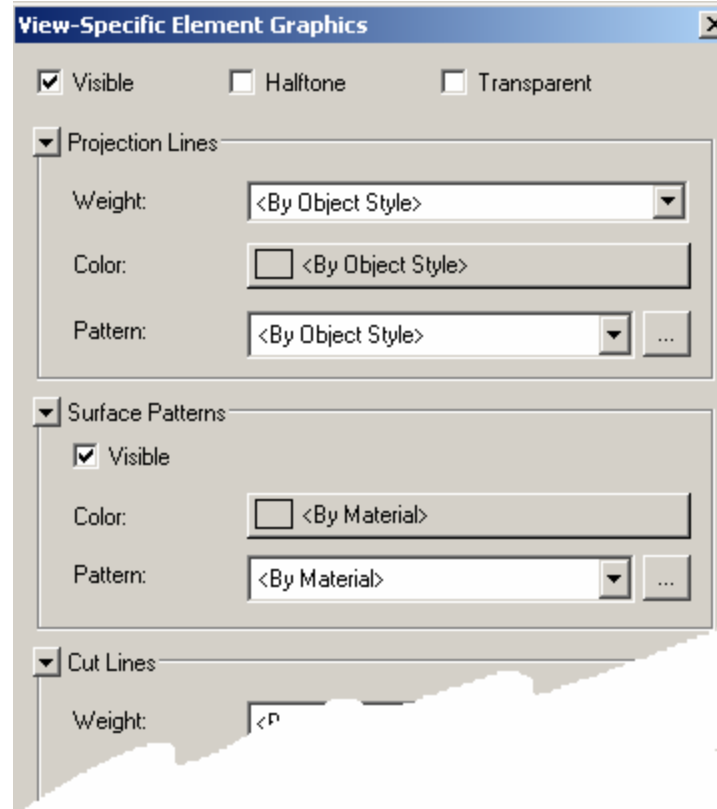
## Visibility and Graphics

## Visibility Graphics Dialog Box

# REVIT® Architecture 2008



# UPDATE



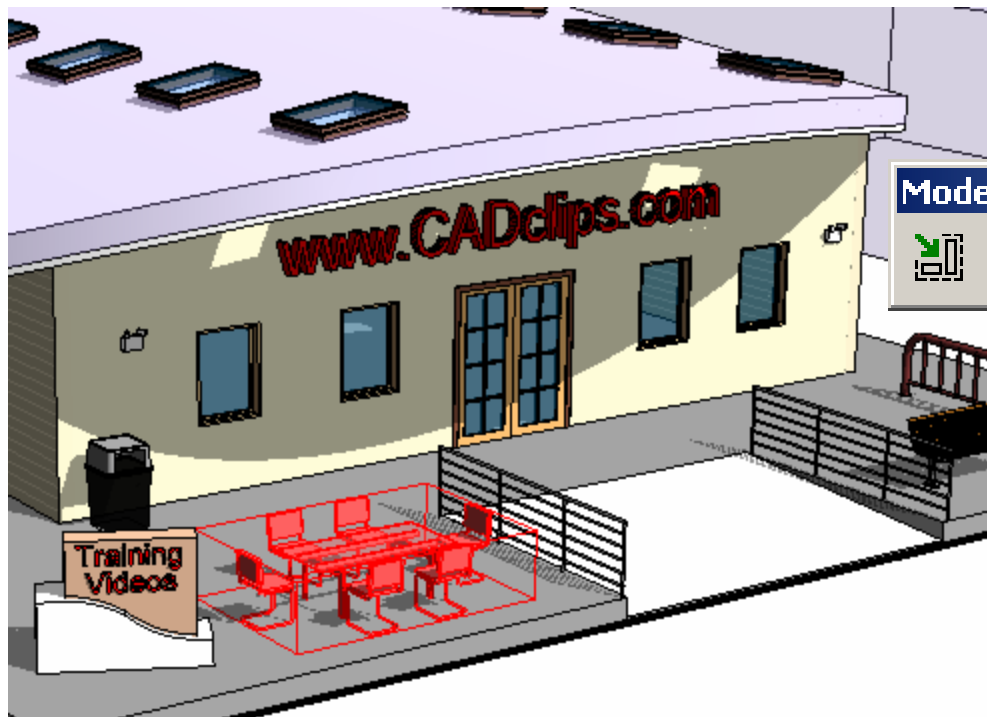
## Visibility and Graphics

## Overriding Individual Elements

# REVIT® Architecture 2008



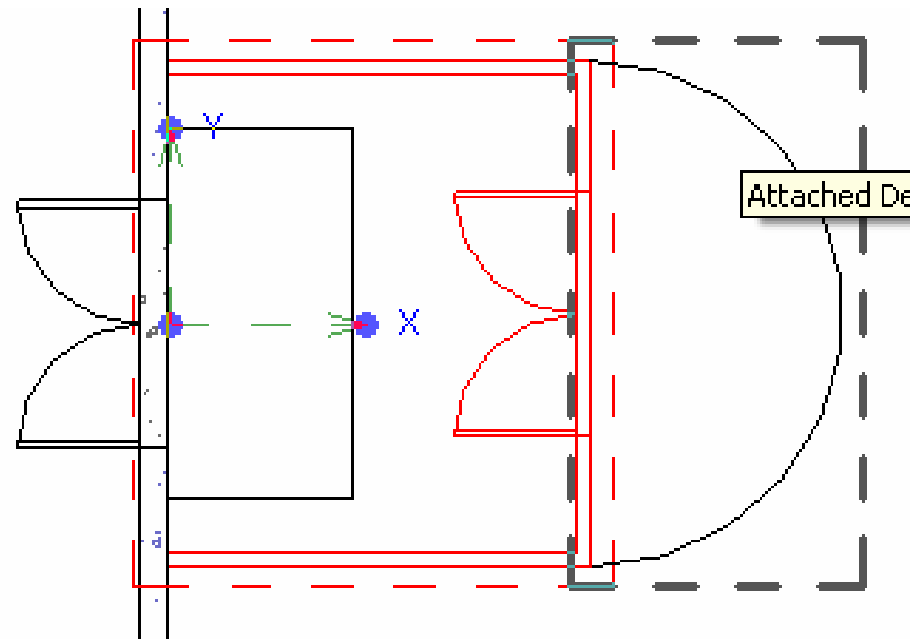
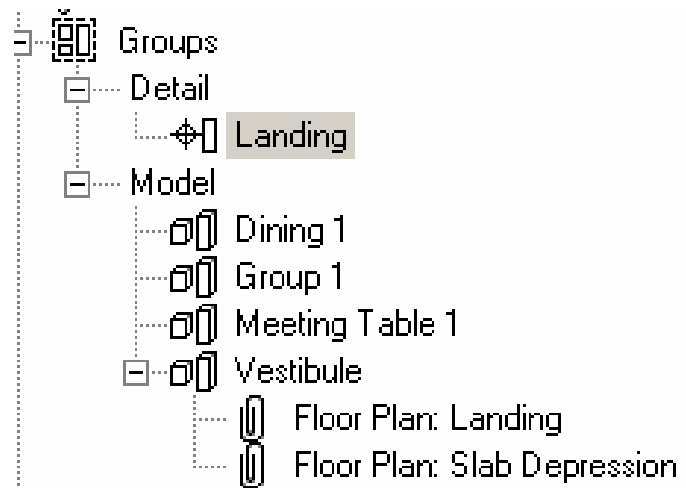
# UPDATE



## Groups

## New Group Editor

## UPDATE

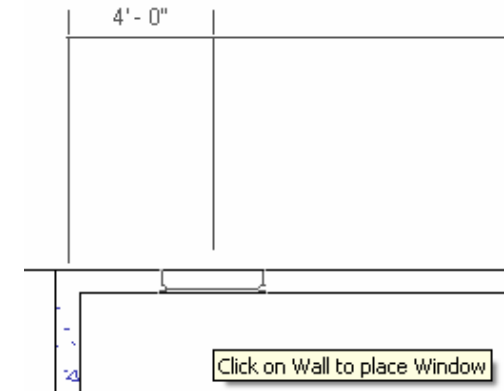
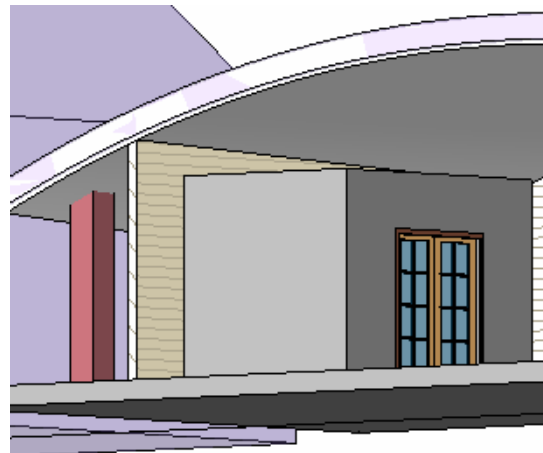
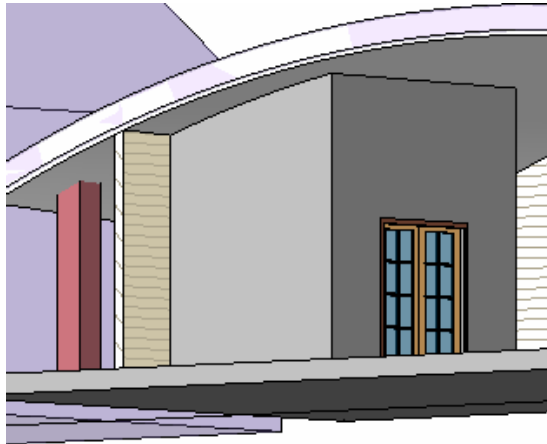


## Groups

## Mixing Detail and Model Groups

# REVIT® Architecture 2008

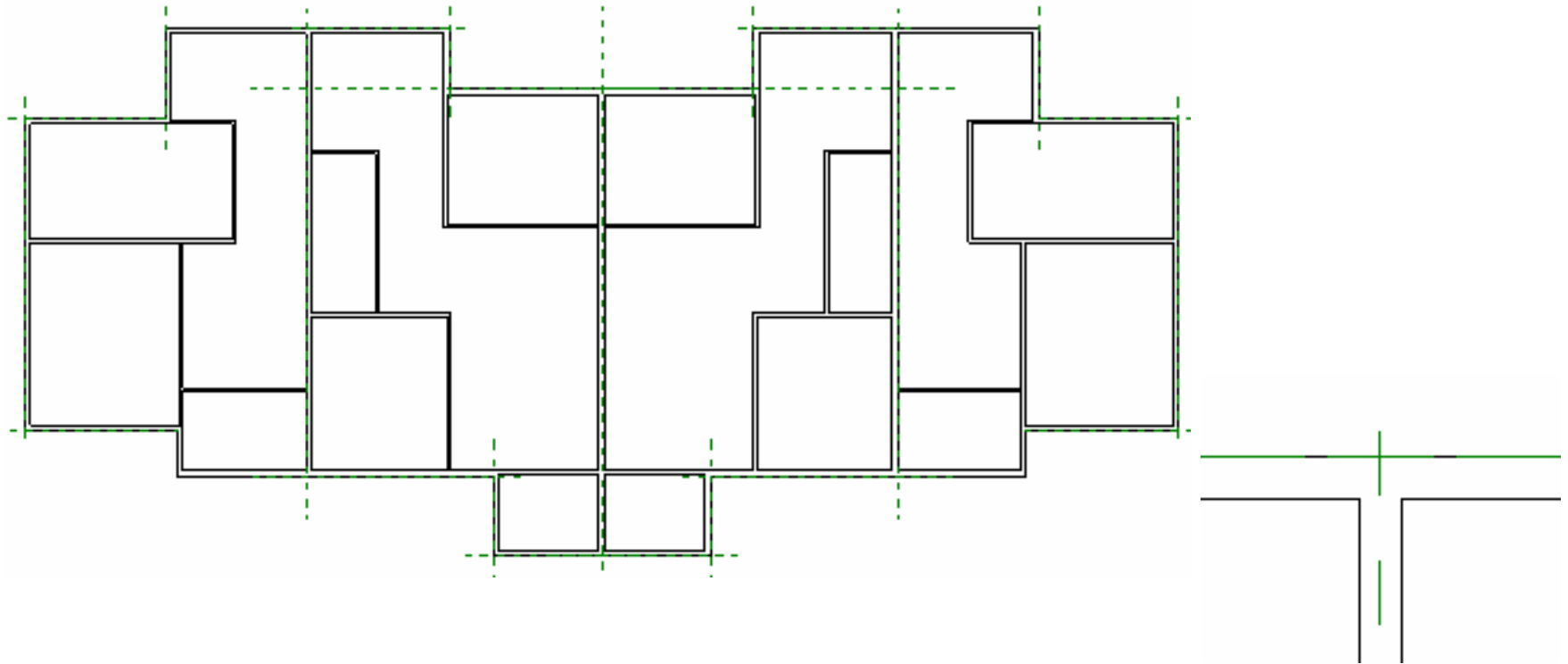
## UPDATE



## Groups

Hosting, Cleanup, Attaching

# UPDATE



## Groups

Unit Plans, Linking, Exclude Member

# REVIT® Architecture 2008

## UPDATE



Read up on Groups in the Help menu

Export Group to RVT, No more RVG

Load File as Group

Swap Groups using the Type Selector

Element Visibility

Duplicate a Group

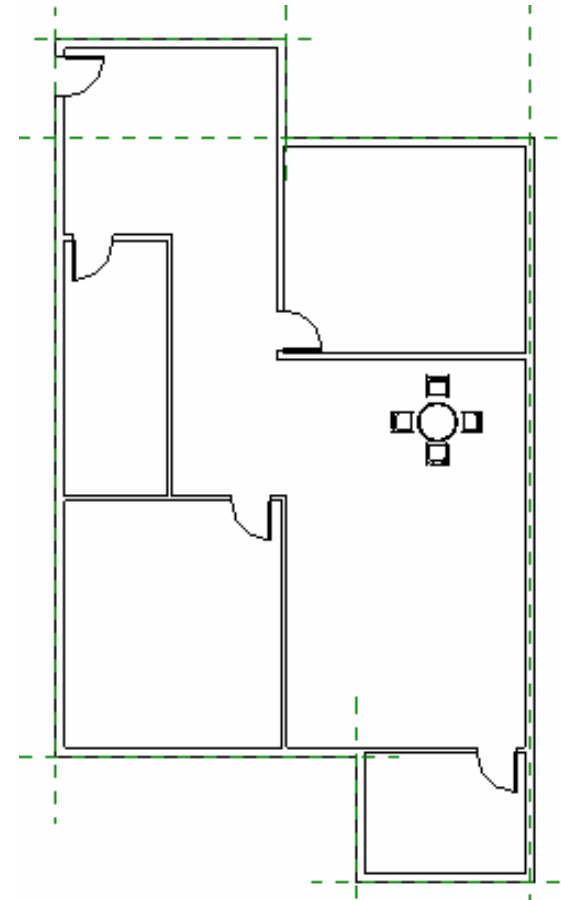
Rename a Group

To Delete Group, Use Select All

Tab to cycle

Groups

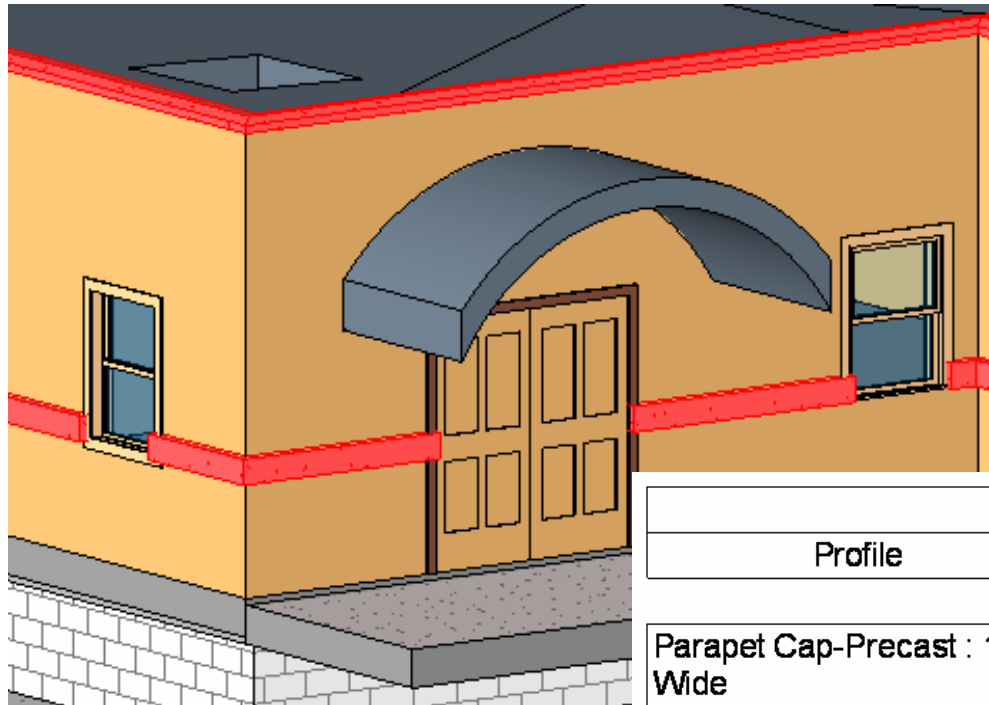
Miscellaneous



# REVIT® Architecture 2008



## UPDATE

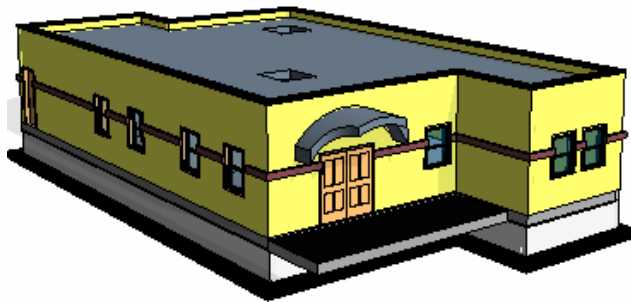
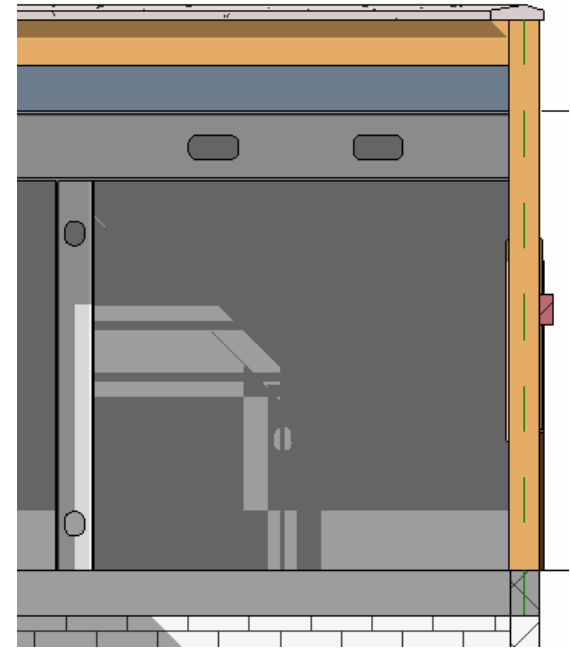
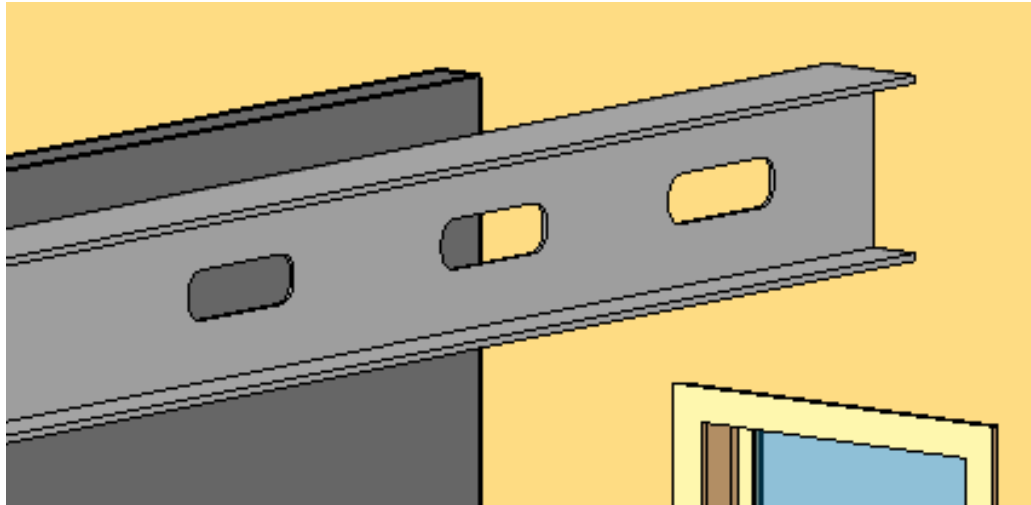


Wall Sweep Schedule		
Profile	Family and Type	Length
Parapet Cap-Precast : 14" Wide	Wall Sweep: Parapet Cap 14"	200' - 11 9/32"
Wall Sweep-Brick Soldier Course : 1 Brick	Wall Sweep: Brick Soldier	143' - 11 9/32"

## Scheduling Wall Sweeps

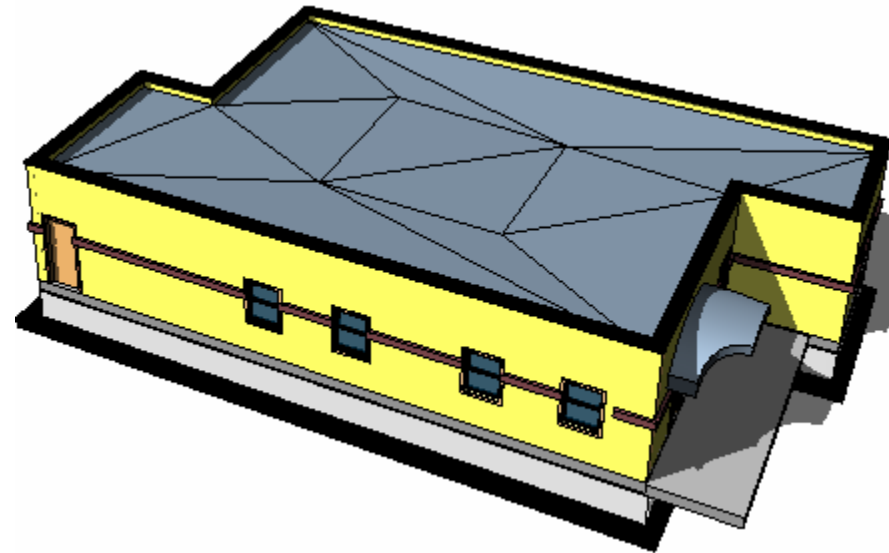
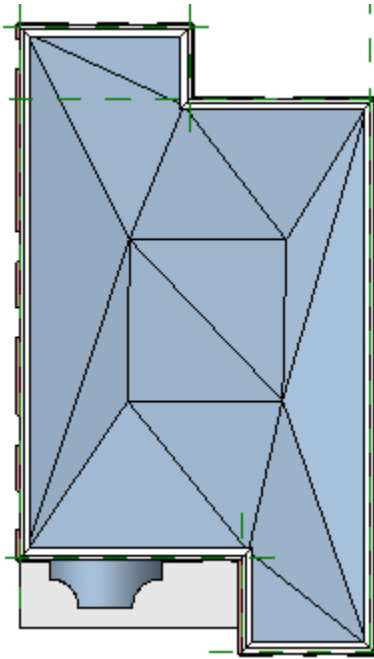
# REVIT® Architecture 2008

## UPDATE



## Structural Framing Openings by Face

## UPDATE



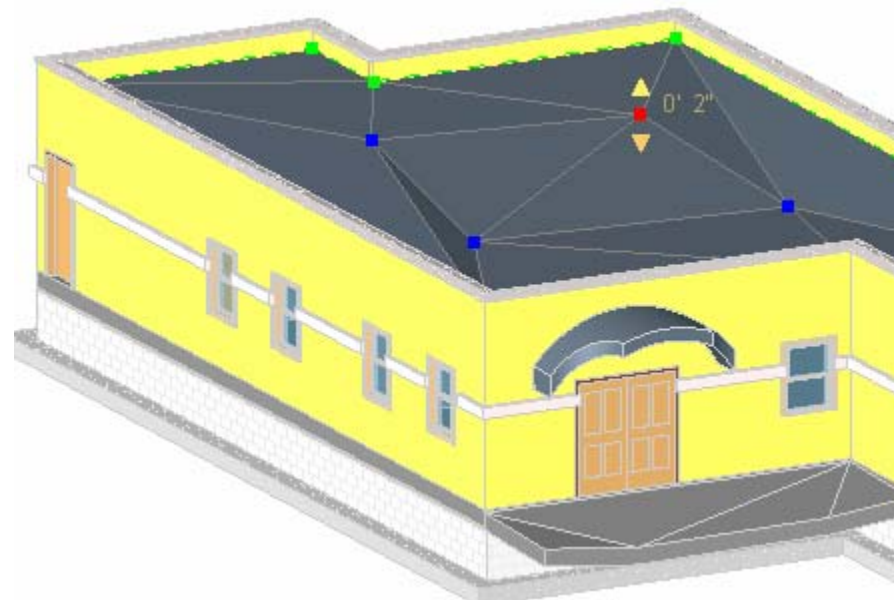
Floors, Slabs, Roofs

Shape Editing - Pick Points

# REVIT® Architecture 2008



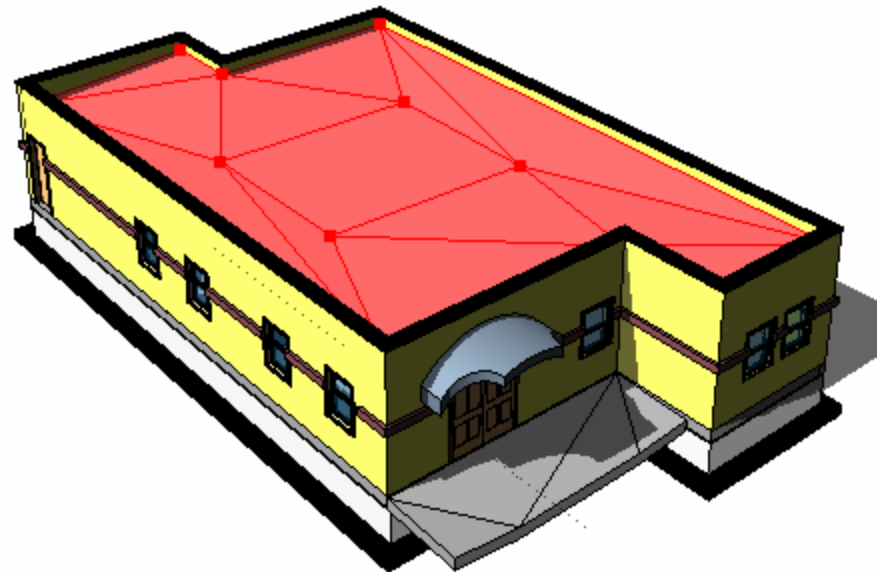
# UPDATE



Floors, Slabs, Roofs

Shape Editing - Modify Sub Elements

## UPDATE



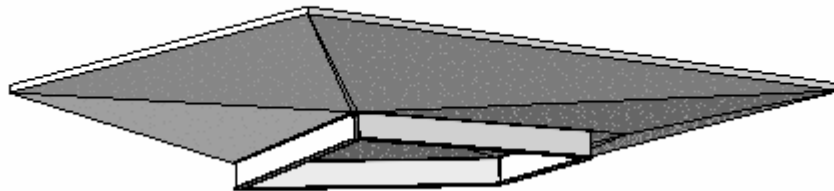
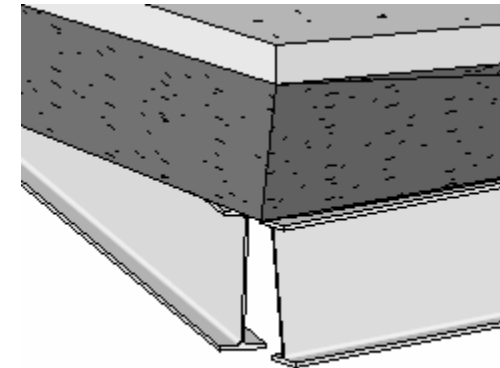
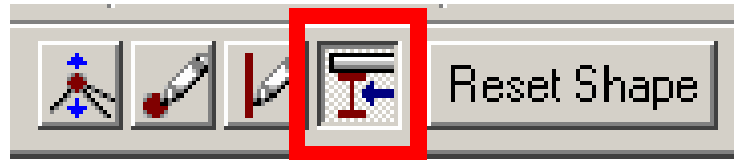
Floors, Slabs, Roofs

Shape Editing - Draw Split Lines

# REVIT® Architecture 2008



## UPDATE



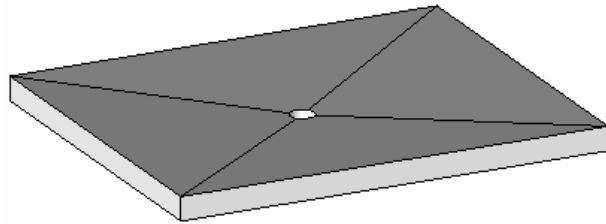
## Floors, Slabs, Roofs

## Shape Editing - Pick Supports

# REVIT® Architecture 2008

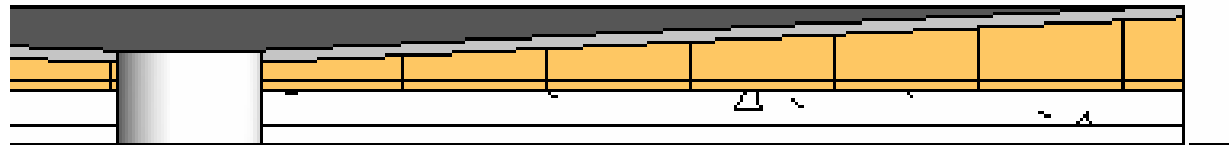


## UPDATE



Layers

	Function	Material	Thickness	Wraps	Variable	
1	Finish 1 [4]	Roofing - EPDM	0' 1"	<input type="checkbox"/>	<input type="checkbox"/>	
2	Thermal/Air Lay	Insulation /	0' 6"	<input type="checkbox"/>	<input checked="" type="checkbox"/>	
3	<b>Core Boundary</b>	<b>Layers Above W</b>	<b>0' 0"</b>			
4	Structure [1]	Concrete - Cast	0' 3"	<input type="checkbox"/>	<input type="checkbox"/>	
5	Structure [1]	Metal - Deck	0' 1 1/2"	<input type="checkbox"/>	<input type="checkbox"/>	
6	<b>Core Boundary</b>	<b>Layers Below W</b>	<b>0' 0"</b>			

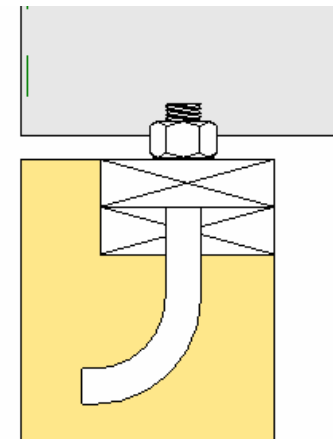
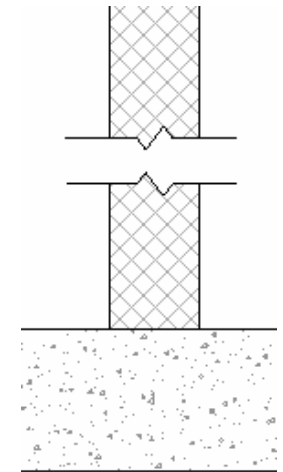
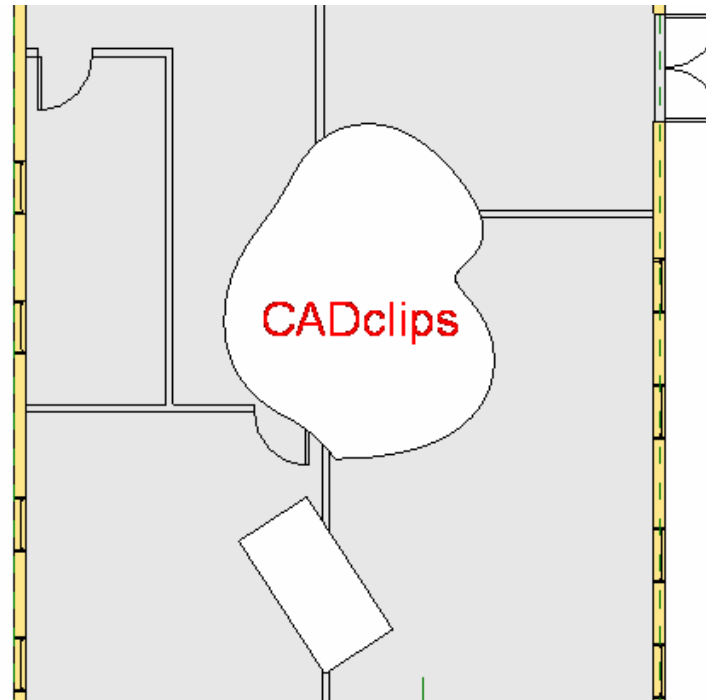
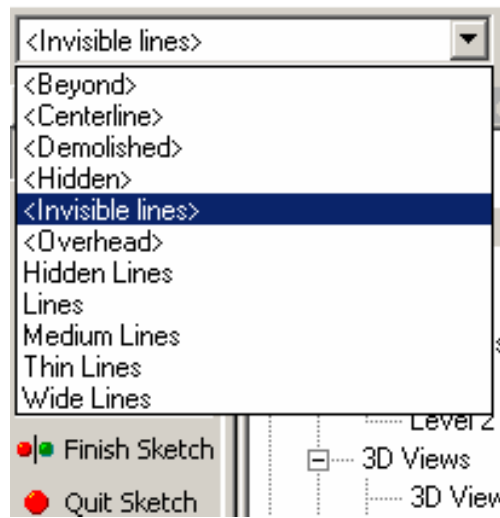


Floors, Slabs, Roofs

Shape Editing - Varying Layer Thickness

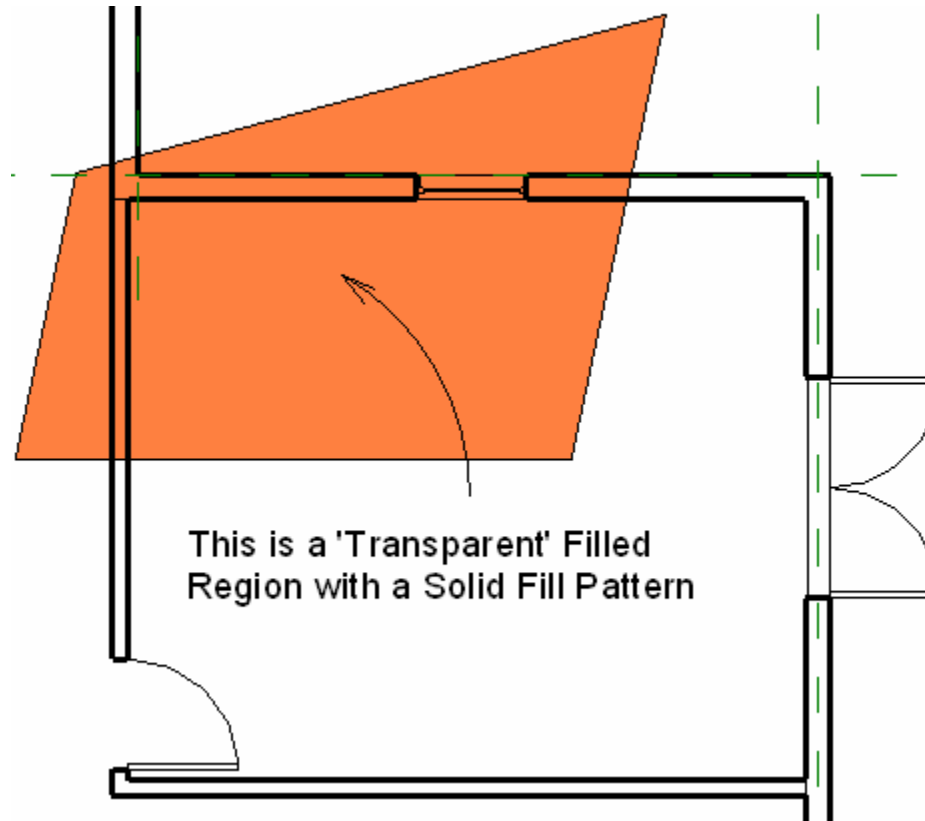
# REVIT® Architecture 2008

## UPDATE



## Masking Regions

## UPDATE



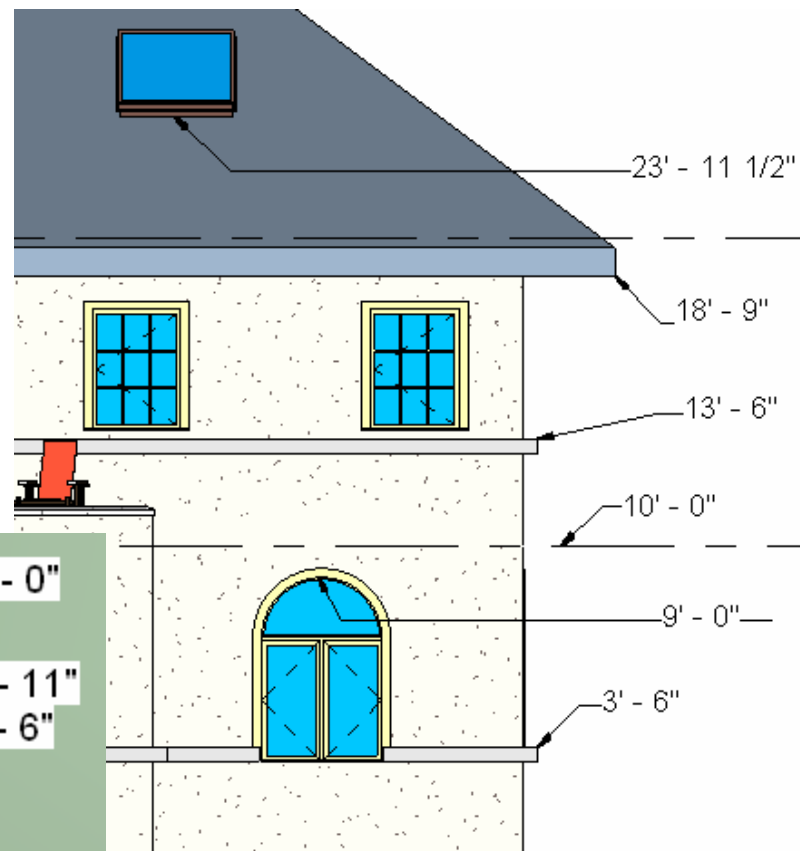
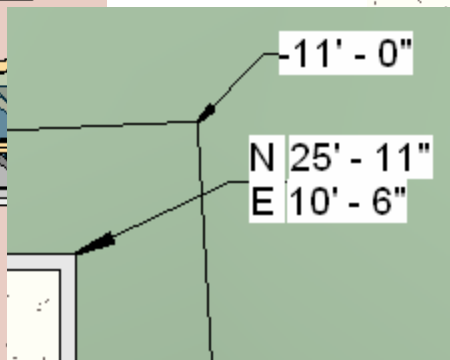
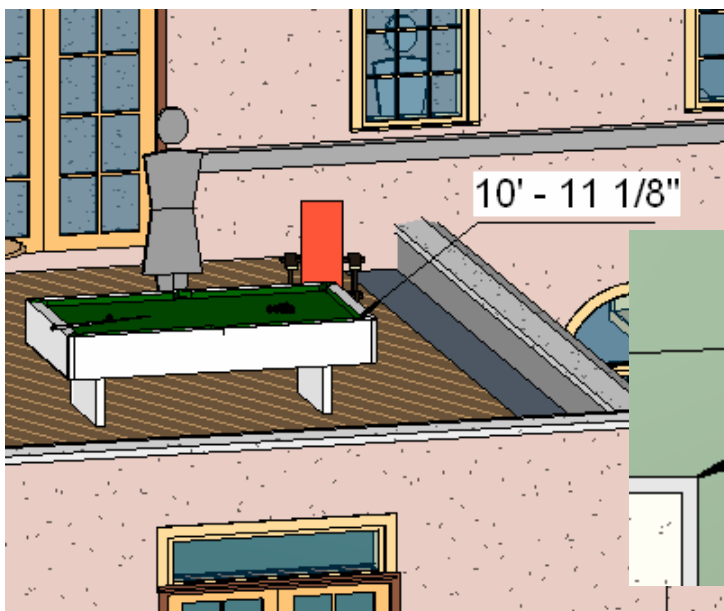
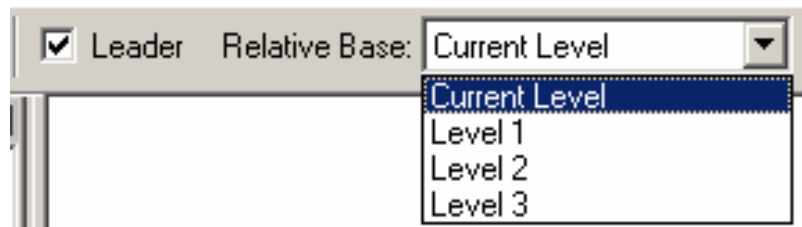
This is a 'Transparent' Filled Region with a Solid Fill Pattern

## Filled Regions

# REVIT® Architecture 2008

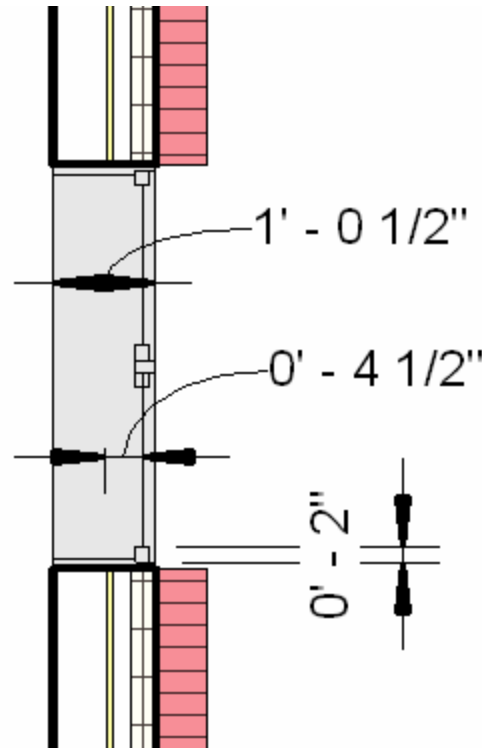


# UPDATE



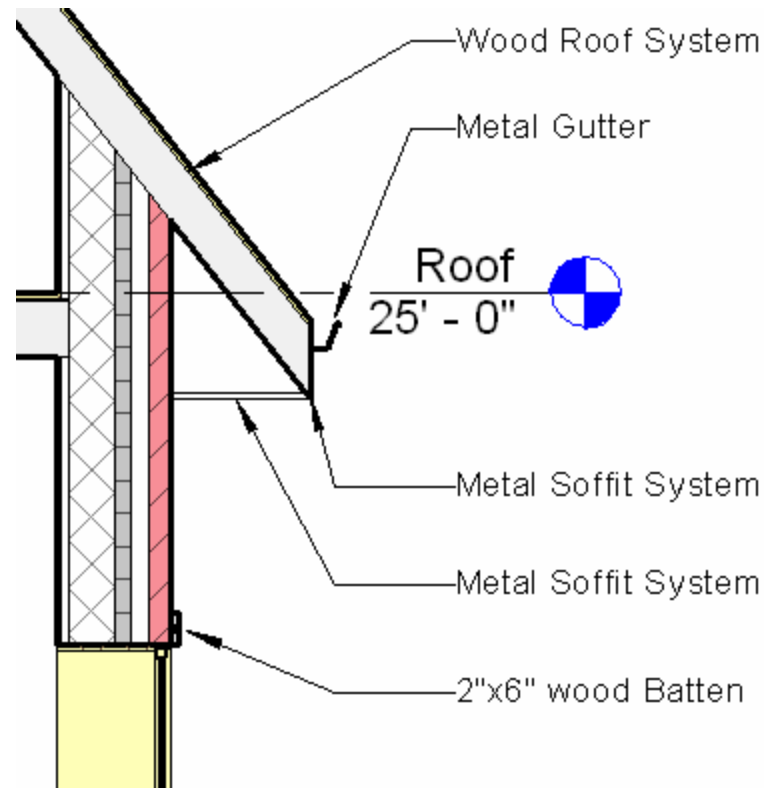
## Spot Elevations

# UPDATE



## Dimension Line Tic Smarts

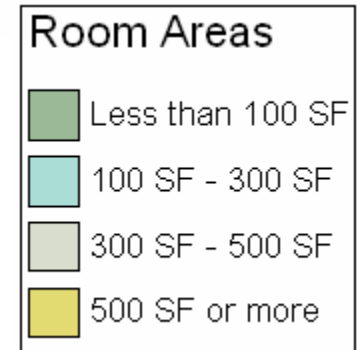
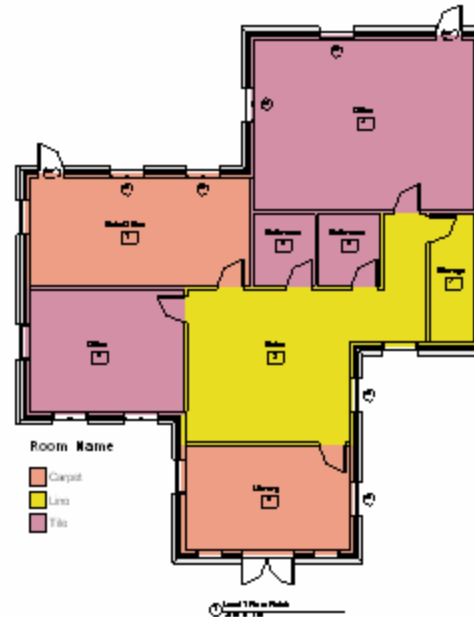
## UPDATE



## Keynote Persistency

# REVIT® Architecture 2008

# UPDATE



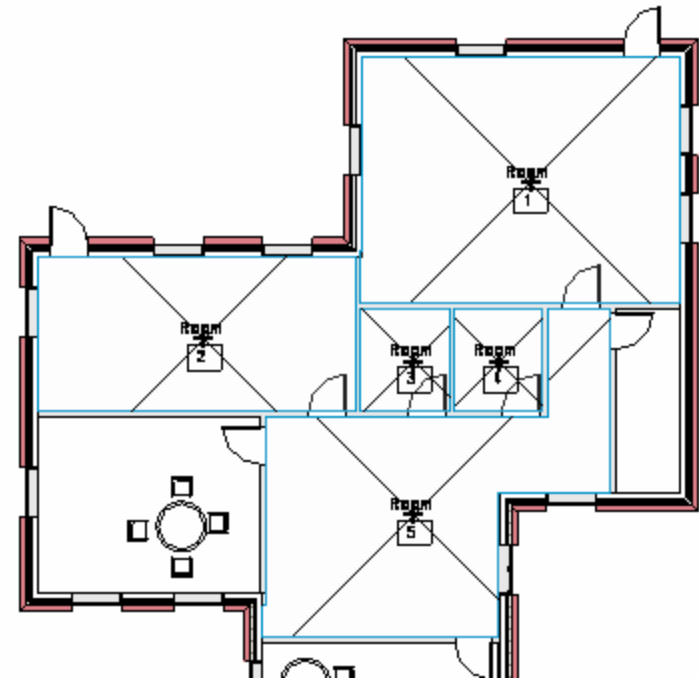
# REVIT® Architecture 2008

## UPDATE



Instance Parameters - Control selected

Parameter	
Volume	Not Computed
<b>Identity Data</b>	
Number	2
Name	Office
Comments	
Occupancy	
Department	Purchasing
Base Finish	
Ceiling Finish	
Wall Finish	
Floor Finish	Tile
Occupant	Ron Bennet



# REVIT® Architecture 2008



# UPDATE

Instance Parameters - Control selecte

Parameter	
Volume	Not Computed
<b>Identity Data</b>	
Number	2
Name	Office
Comments	
Occupancy	
Department	Purchasing
Base Finish	
Ceiling Finish	
Wall Finish	
Floor Finish	Tile
Occupant	Ron Bennet

**Edit Color Scheme**

Schemes: [ab] X

Scheme Definition

Title: Department Legend

Color: Department  By value  By range

	Value	Visible	Color	Fill Pattern	Preview	In Use
1	Admin	<input checked="" type="checkbox"/>	RGB 156-185	Solid fill		Yes
2	N/A	<input checked="" type="checkbox"/>	RGB 096-175	Solid fill		Yes
3	Purchasing	<input checked="" type="checkbox"/>	PANTONE 61	Solid fill		Yes
4	Research	<input checked="" type="checkbox"/>	RGB 139-166	Solid fill		Yes
5	Retail	<input checked="" type="checkbox"/>	PANTONE 62	Solid fill		Yes

Options

Display Color Fill in:  Foreground  Include Rooms/Areas from linked files  Background

# REVIT® Architecture 2008



# UPDATE

Wall Schedule						
RVT Link: Name	RVT Link: File Name	Length	Area	Type	Struct ural Usage	Width

South Shaft	i_RRB_link	16' - 9 9/16"	1041 SF	Generic - 8" Masonry	Bearing	0' - 7 5/8"
South Shaft	i_RRB_link	12' - 3"	760 SF	Generic - 8" Masonry	Bearing	0' - 7 5/8"
South Shaft	i_RRB_link	7' - 11 5/8"	351 SF	Generic - 8" Masonry	Bearing	0' - 7 5/8"
North Shaft	i_RRB_link	16' - 9 9/16"	1041 SF	Generic - 8" Masonry	Bearing	0' - 7 5/8"
North Shaft	i_RRB_link	12' - 3"	760 SF	Generic - 8" Masonry	Bearing	0' - 7 5/8"
North Shaft	i_RRB_link	7' - 11 5/8"	351 SF	Generic - 8" Masonry	Bearing	0' - 7 5/8"

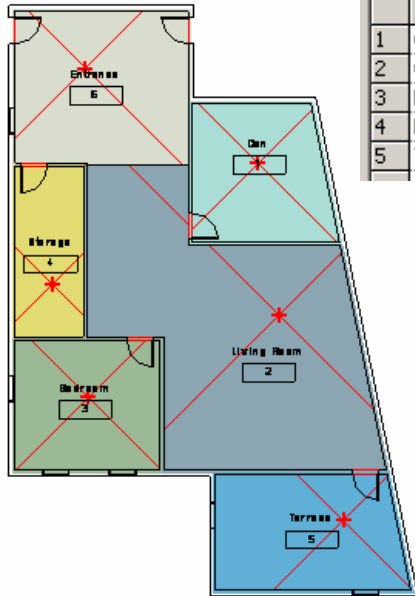
## Linked Models

## Schedule 'Link Name' & 'Link File Name'

# REVIT® Architecture 2008



# UPDATE



	Value	Visible	Color	Fill Pa
1	Carpet	<input checked="" type="checkbox"/>	Cyan	Solid fill
2	Conc	<input checked="" type="checkbox"/>	Magenta	Solid fill
3	Hardwood	<input checked="" type="checkbox"/>	Red	Solid fill
4	Lino	<input checked="" type="checkbox"/>	Yellow	Solid fill
5	Tile	<input checked="" type="checkbox"/>	Blue	Solid fill

By host view     By linked view     Custom

Linked view: Floor Plan: Level 1

Color fill: <By linked view>

Detail level: <By linked view> (Coarse)

Model Categories    Annotation Categories    Imported Categories    Filters    **Revit Links**

Visibility	Halftone	Display Settings
+ <input checked="" type="checkbox"/> Unit 1A.rvt	<input type="checkbox"/>	<b>Custom</b>

Include Rooms/Areas from linked files

## Linked Models Host File - Color Schemes

## UPDATE

1. Link 'reference type' > Attachment or Overlay.
2. Copy objects from a linked file to the clipboard and then paste to the local file.
3. Copy the entire link to the clipboard and paste to another project.
4. Use constraints with linked files.
5. Note the new link Display options.

## Linked Models Miscellaneous

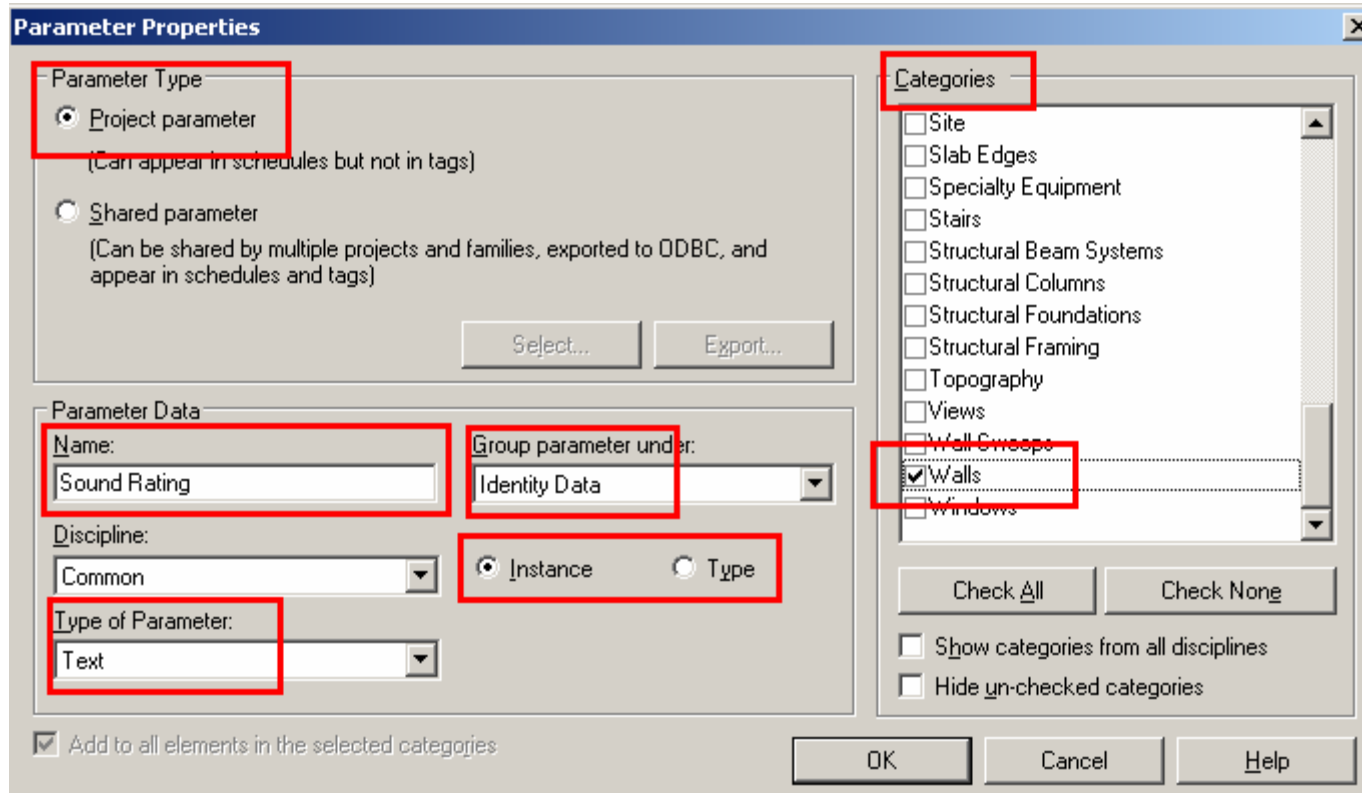


*Daryl, Erin and baby Ivy*

# REVIT® Architecture 2008



# UPDATE



## Project Parameters System Family - Walls

# REVIT® Architecture 2008



# UPDATE

## Lighting Legend

-  Flourescent
-  Incandescent
-  Natural
-  Valance

**Parameter Properties**

**Parameter Type**

- Project parameter  
(Can appear in schedules but not in tags)
- Shared parameter  
(Can be shared by multiple projects and families, exported to ODBC, and appear in schedules and tags)

Select... Export...

**Parameter Data**

Name: Lighting

Group parameter under: Electrical - Lighting

Discipline: Common

Instance  Type

Type of Parameter: Text

Add to all elements in the selected categories

**Categories**

- Project Information
- Property Line Segments
- Property Lines
- Railings
- Ramps
- Roofs
- Rooms
- Site
- Slab Edges
- Specialty Equipment
- Stairs
- Structural Beam Systems
- Structural Columns
- Structural Foundations

Check All Check None

Show categories from all disciplines

Hide un-checked categories

OK Cancel Help

## Project Parameters System Family - Rooms